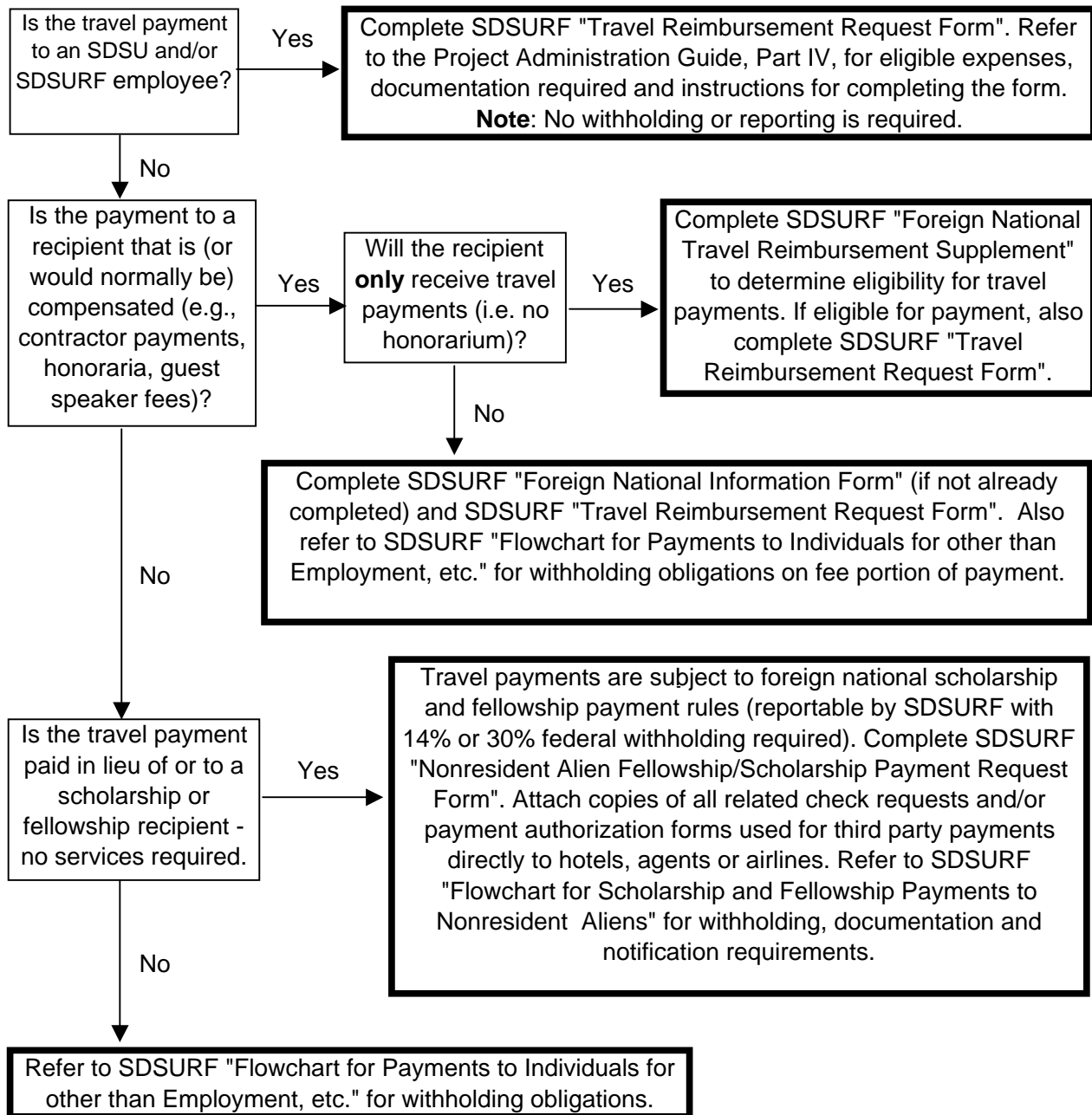


**San Diego State University Research Foundation
Flowchart for Travel Payments
to Nonresident Aliens**



IMPORTANT REMINDERS:

A WB or B-1 visa holder can be reimbursed travel expenses even if they do not meet the 9, 5, 6 rule.
 A WT or B-2 visa holder **cannot** be reimbursed travel expenses if they do not meet the 9, 5, 6 rule.
 Generally, all other foreign recipients must be sponsored by SDSU in order to receive travel payments.
 Many visa types do not allow the foreign recipient to receive compensation or travel reimbursements.

PRIOR COPIES OF THIS FLOWCHART SHOULD NOT BE USED